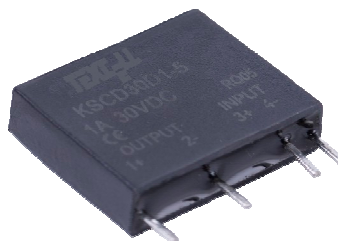


Solid State Relay (Single Phase DC Output)

KSCD

Features

- Opto-isolation
- Load current: 0.02A-4A @60VDC
- Control voltage: 5VDC, 12VDC, 24VDC
- Dielectric strength: $\geq 2500\text{VACrms}$
- Suitable for the high density PCB installation
- RoHS compliant



1. DESCRIPTION

KSCD series is DC solid state relay with high EMC and high inrush current capability. Control voltage is 5VDC, 12VDC and 24VDC, opto-isolation between input and output, dielectric strength $\geq 2500\text{VACrms}$

2. APPLICATION

Applicable to the isolation and control of weak current to high voltage, as well as the transformation of electricity, convenient to all kinds of computers and digital interface circuit connection, widely used in all kinds of DC motor, DC power supply and electromagnetic devices.

3. IMPORTANT NOTICE

- 1) Soldering must be finished within 10 seconds at 250°C , and finished within 5 seconds at 350°C .
- 2) Terminal polarity to ensure proper control, or may damage the product.
- 3) The product is electrostatic sensitive device, during the installation process, personnel and equipment must be electrostatic protection, otherwise may damage the product.

4. TECHNICAL SPECIFICATION

1) Input Circuit

Control Voltage Range	5VDC	4-6VDC
	12VDC	9.6-14.4VDC
	24VDC	19.2-28.8VDC
Minimum Turn-on Voltage	5VDC	4VDC
	12VDC	9.6VDC
	24VDC	19.2VDC
Minimum Turn-off Voltage		1.0VDC
Maximum Input Current		25mA

2) Output Circuit

Load Voltage Range	30VDC	3-30VDC
	60VDC	3-60VDC
Transient Overvoltage	30VDC	33Vpk
	60VDC	66Vpk
Load Current Range	1A	0.02-1A
	4A	0.02-4A
Maximum Surge Current [@10ms]	1A	4A
	4A	20A
Maximum Turn-on Time		1ms
Maximum Turn-off Time		1ms
Maximum Off-state Leakage Current [@Rated Voltage]		0.1mA
Maximum On-state Voltage Drop [@Rated Current]	30VDC	1.5VDC
	60VDC	0.5VDC

3) General Information

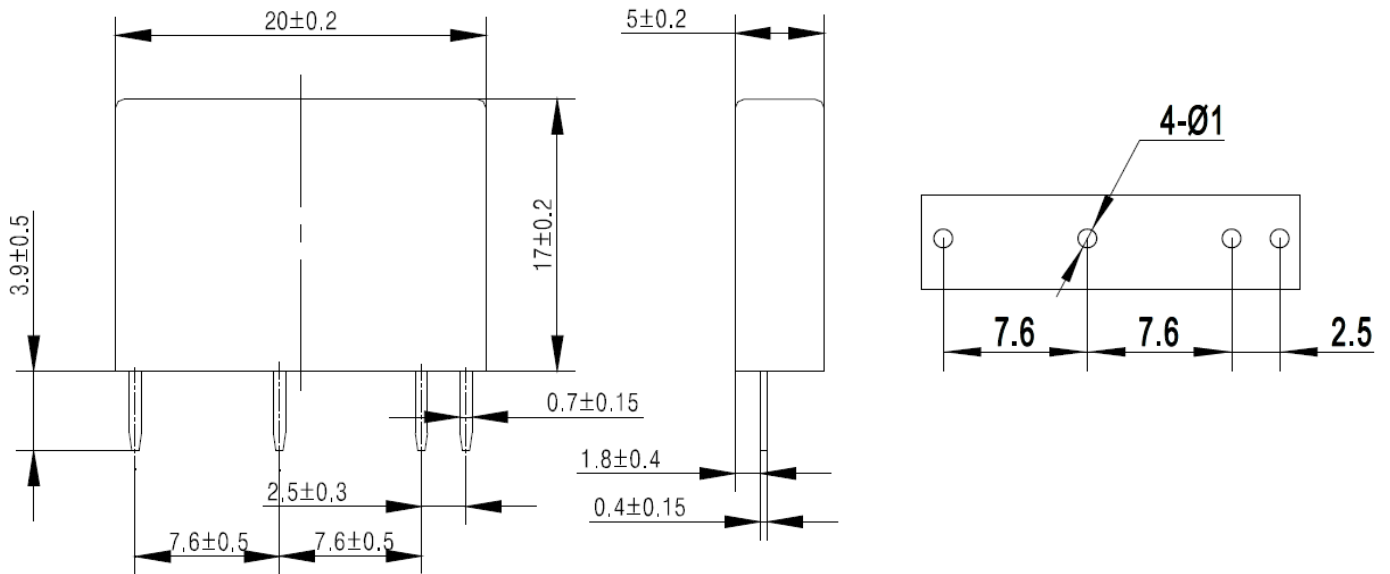
Dielectric Strength, Input/Output [50/60Hz]	≥2500VACrms
Insulation Resistance	1000MΩ [@500VDC]
Ambient Operating Temperature Range	-30℃ ~ +80℃
Ambient Storage Temperature Range	-30℃ ~ +100℃
Weight [Typical]	3g

5. ORDERING INFORMATION

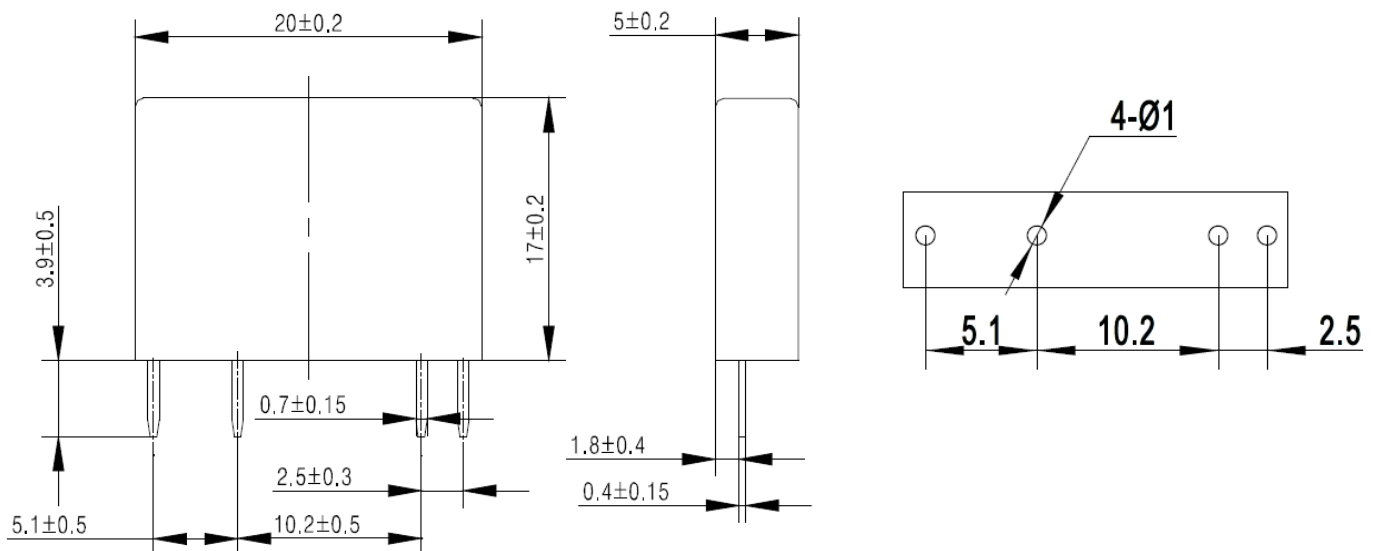
<u>K</u> <u>S</u> <u>C</u> <u>D</u>	<u>6</u> <u>0</u>	<u>D</u>	<u>4</u>	<u>-1</u> <u>2</u>	<u>I</u>
①	②	③	④	⑤	⑥
① Relay Model	KSCD				
② Load Voltage	30: 30VDC 60: 60VDC				
③ Control	D: DC control				
④ Load Current	1: 1Amp 4: 4Amp				
⑤ Control Voltage	5: 5VDC 12: 12VDC 24: 24VDC				
⑥ Footprint	None: Standard footprint T: T type footprint				

6. INSTALLATION

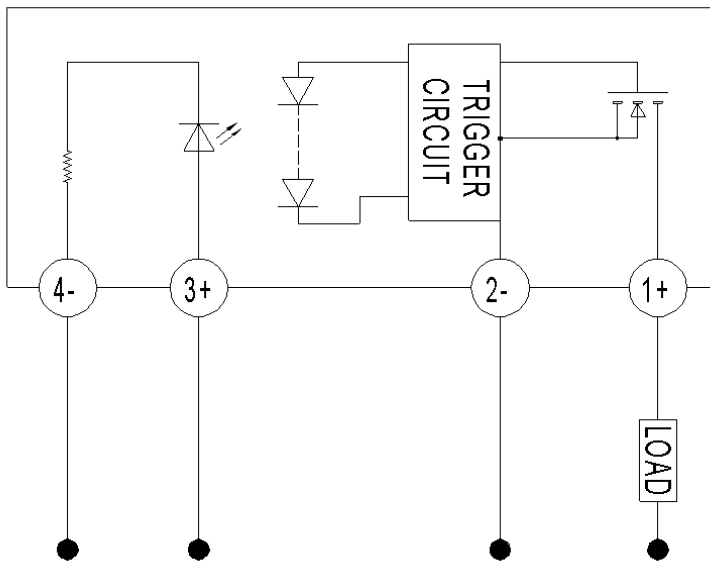
a) Standard Footprint



b) T type Footprint



7. WIRING DIAGRAM



8. THERMAL CURVE

