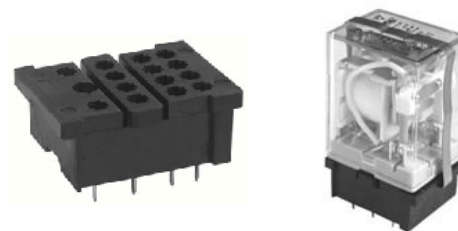


Relay Socket

KMH□-B

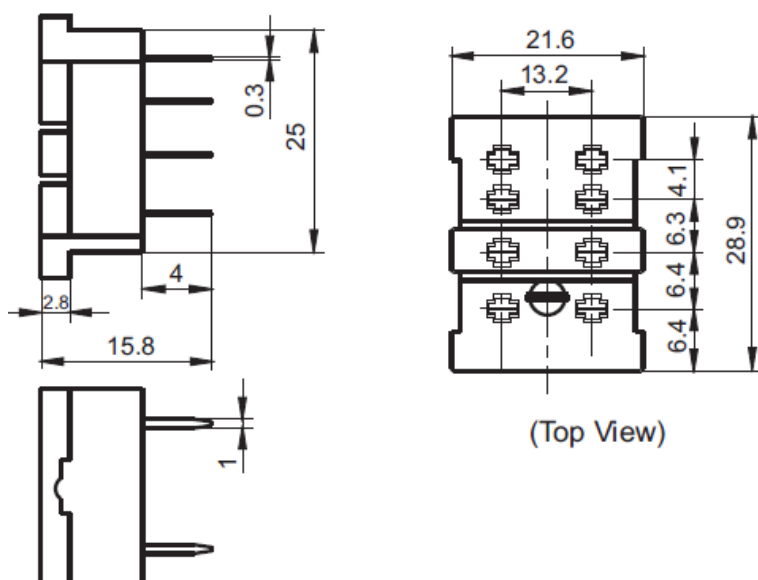
Characteristics

- Ambient temperature : -40°C to 70°C
- Rated voltage : 250VAC
- Rated current : 7A
- Dielectric strength(Min.) : 2000VAC (between input and output)
- Steel retainer : Available
- Type: PCB terminal, PCB mounting
- Applicable relay type : KMH, EKM series (2, 3, 4 poles)

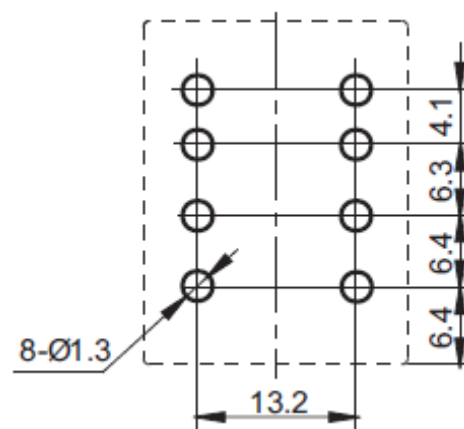


KMH2-B

Outline Dimensions

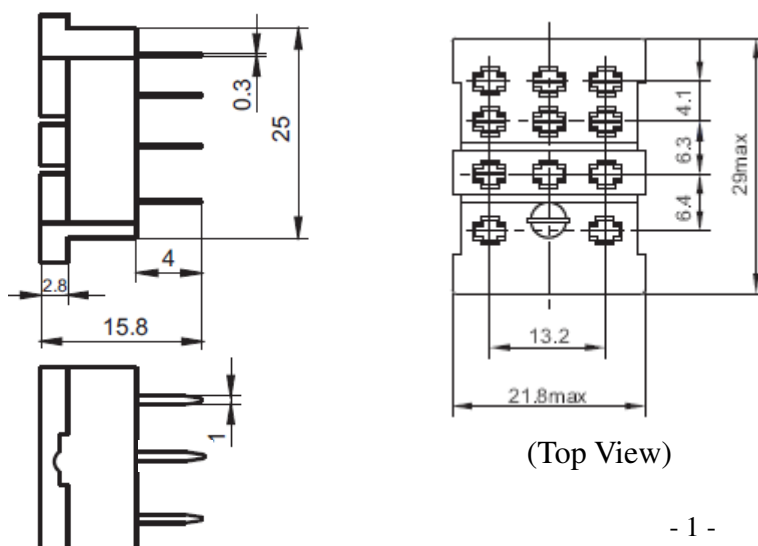


PCB Layout (Top View)

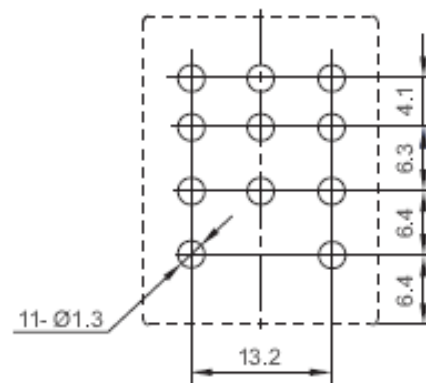


KMH3-B

Outline Dimensions

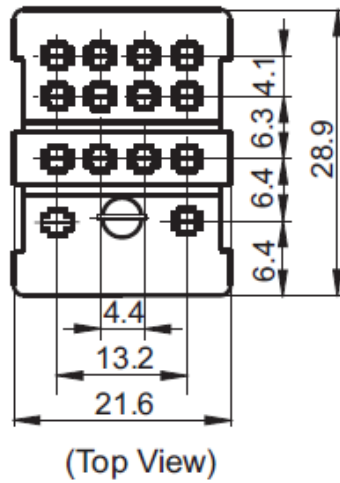
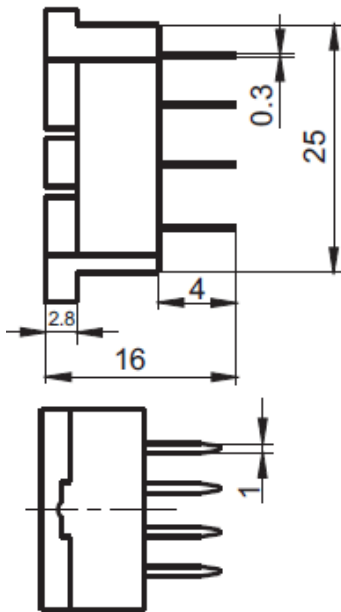


PCB Layout (Top View)

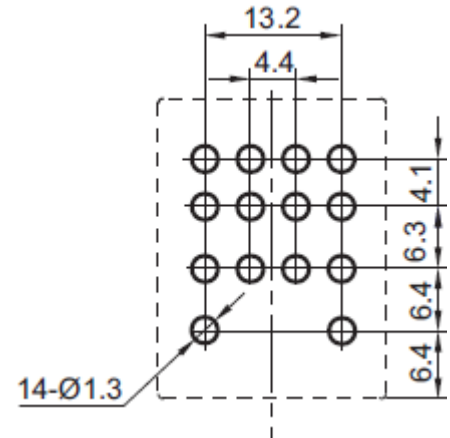


KMH4-B

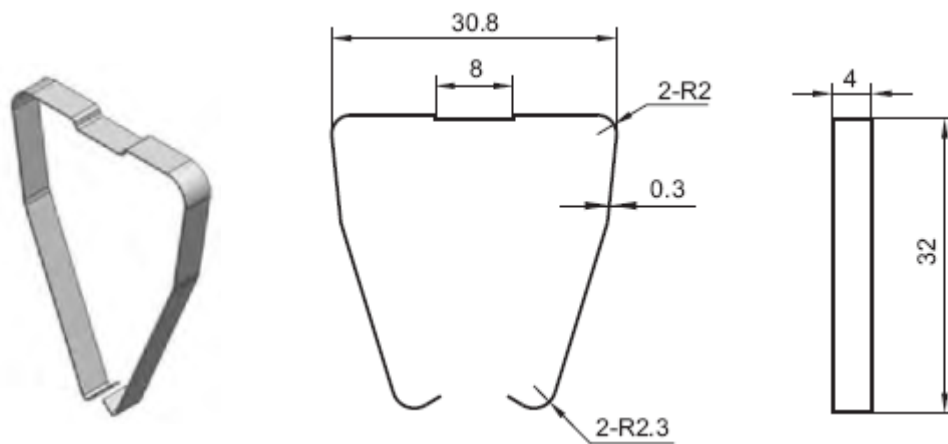
Outline Dimensions



PCB Layout
(Top View)



Retainer Dimensions (KM-R1)



Relay Socket

KMH□-C

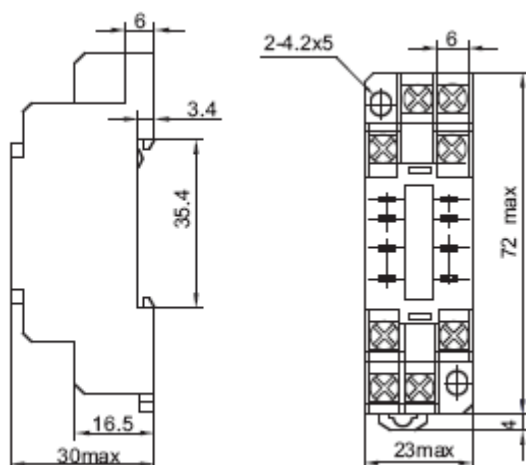
Characteristics

- Ambient temperature : -40°C to 70°C
- Rated voltage : 250VAC
- Rated current : 7A
- Dielectric strength(Min.) : 2000VAC (between input and output)
- Steel retainer : Available
- Terminal torque : 0.8Nm
- Wire strip length: 7mm
- Max. wire range: 2 x 1.5mm²
- Type: DIN rail or Screw mounting, Screw terminal, Without finger protection device
- Applicable relay type : KMH, EKM series (2, 3, 4 poles)



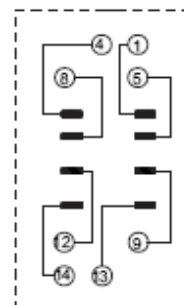
Outline Dimensions

KMH2-C



(Top View)

Wiring Diagram



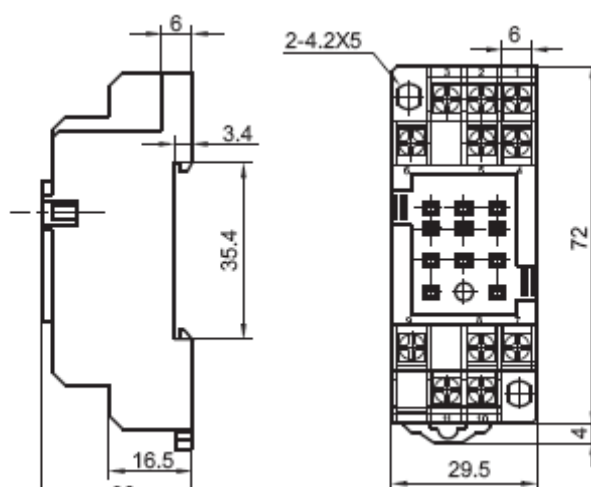
(Top View)



PCB Layout

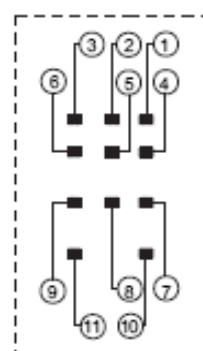
Outline Dimensions

KMH3-C



(Top View)

Wiring Diagram



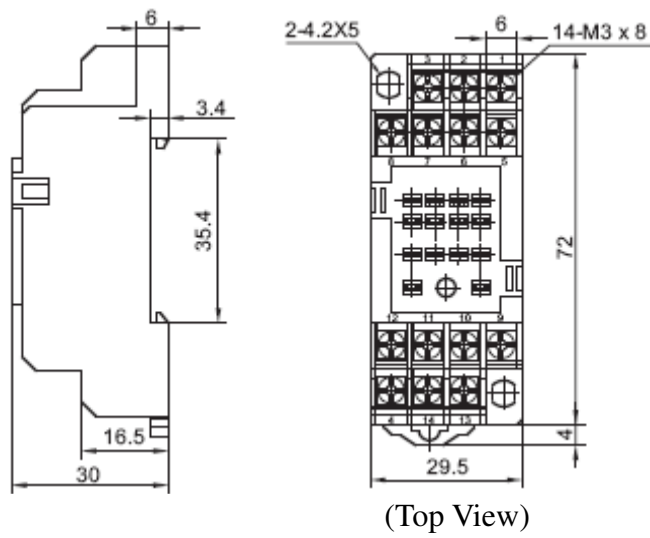
(Top View)



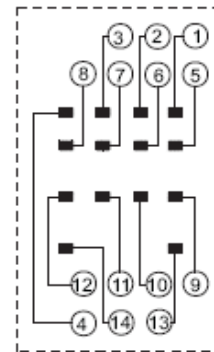
PCB Layout

Outline Dimensions

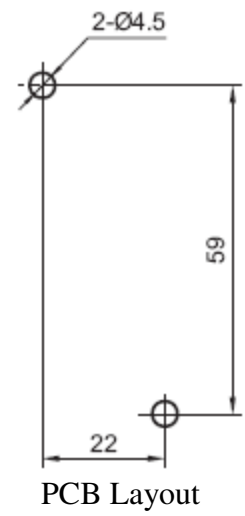
KMH4-C



Wiring Diagram



(Top View)



Retainer Dimensions (KM-R2)

