

PCB Relay Socket	SK-1C-□
------------------	---------

Characteristics

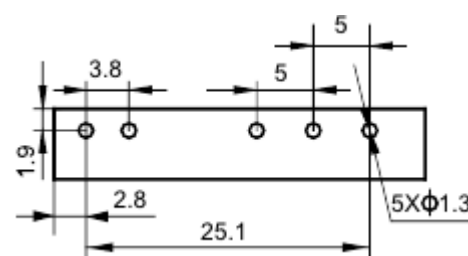
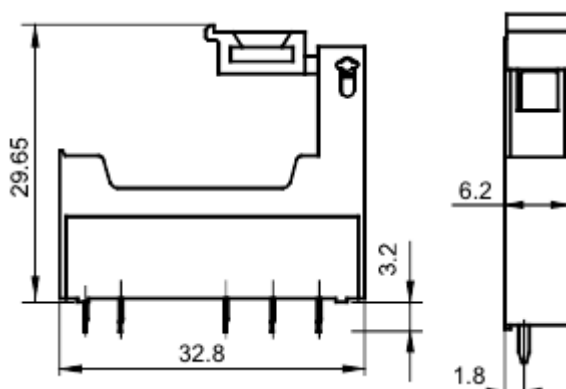
Type	Nominal Voltage	Nominal Current	Ambient Temperature	Input Voltage	Relay's Applicable Rated Voltage	Polarity of Input Voltage	Unit Weight (Approx.)	Min. Package Quantity
SK-1C-A	250VAC	6A	-40℃~70℃	(6~60)VDC	(6~60)VDC	Requirement	2.9g	50
SK-1C-B1				(6~24)VDC	(6~24)VDC	Requirement	4g	36
SK-1C-B2				(48~60)VDC	(48~60)VDC	Requirement	4g	36

1. DIMENSIONS (Unit: mm)

1) SK-1C-A

Outline Dimensions

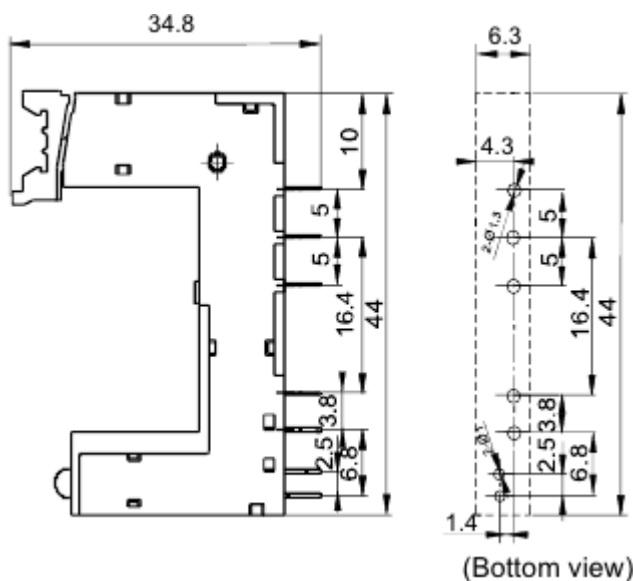
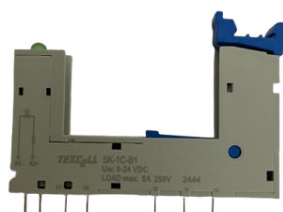
PCB Layout



2) SK-1C-B1, SK-1C-B2

Outline Dimensions

PCB Layout

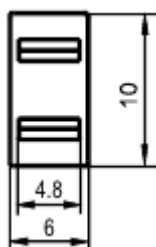


2. DIMENSIONS OF RELATED ACCESSORY (Unit: mm)

SK-M

Marker

(For SK-1C-B1 and SK-1C-B2)



Precautions for use

For your personal safety and the normal operation of the equipment, as well as to prevent fire, please note the following issues:

1. The rated current of the socket should be no less than the rated current of the relay.
2. Sockets are required to be firmly fixed to prevent the wiring from loosening and affecting the quality of wiring.
3. Be sure to disconnect power to the outlet before installation, disassembly, wiring, maintenance and inspection.
4. Prevent foreign objects such as wire shavings from falling inside the product when wiring.
5. Be sure to install the relay in place, and use accessories such as retainer if necessary to improve contact reliability.

Do not use with incomplete connections.

6. Be sure to observe the relay ratings and do not overload the relay.
7. Before selecting a relay, make sure that the drive voltage matches the relay excitation voltage.

Things to be noticed when selecting sockets:

1. Please choose suitable relay socket according to the actual mounting environment, relay contact poles and terminal layout. If there is any query on selection, please contact TEXCELL for the technical service.
2. Relevant accessories must be selected separately. Please indicate the model of the selected accessories when ordering.
3. The above only lists typical socket and related accessory models suitable for NA relay products, please contact us if you have any special requirements.
4. Main outline dimension, outline dimension $>50\text{mm}$, tolerance should be $\pm 1\text{mm}$; $20\text{mm} < \text{outline dimension} \leq 50\text{mm}$, tolerance should be $\pm 0.5\text{mm}$; $5\text{mm} < \text{outline dimension} \leq 20\text{mm}$, tolerance should be $\pm 0.4\text{mm}$, outline dimension $\leq 5\text{mm}$, tolerance should be $\pm 0.3\text{mm}$.
5. DIN rail mounting: recommend to use standard rail $35 \times 7.5 \times 1\text{mm}$, $35 \times 15 \times 1\text{mm}$.